

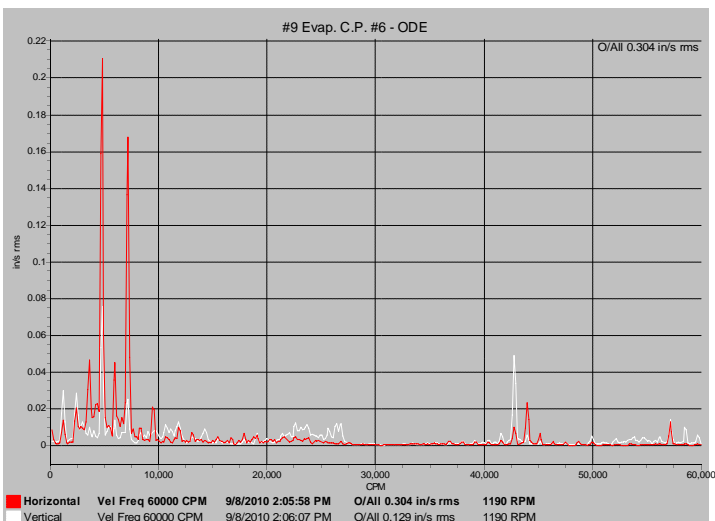
# Vibration Report Trend Sample

Anywhere, USA

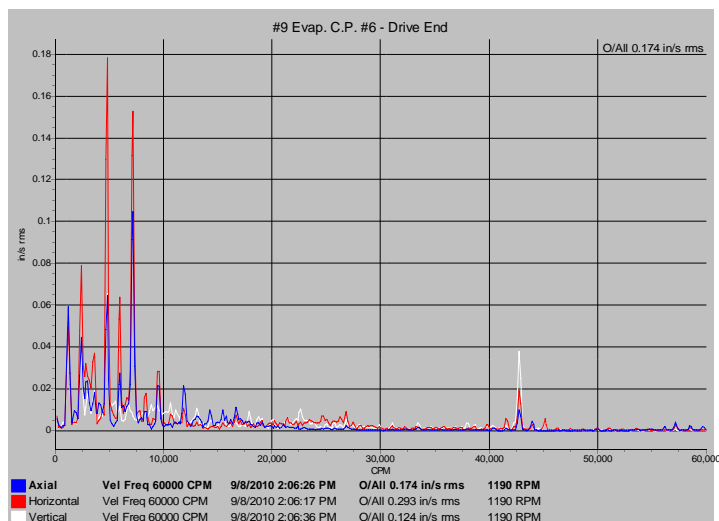
Date Collected:  
January 1, 2011

**No. 9 Evaporator  
Circulation Pump #6**

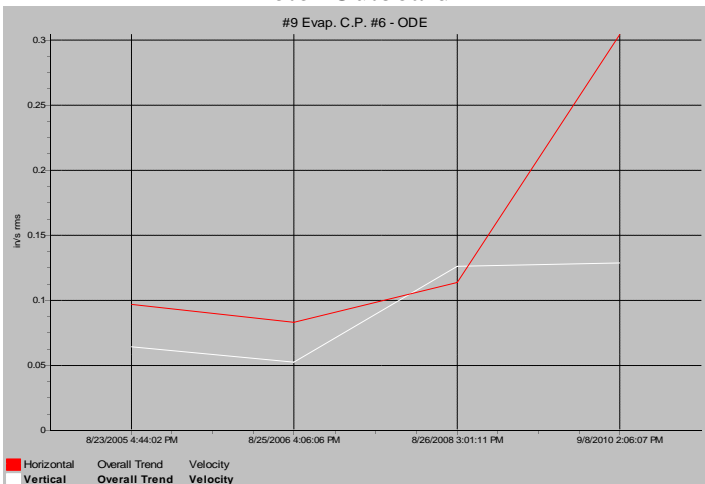
**PRIORITY  
3**



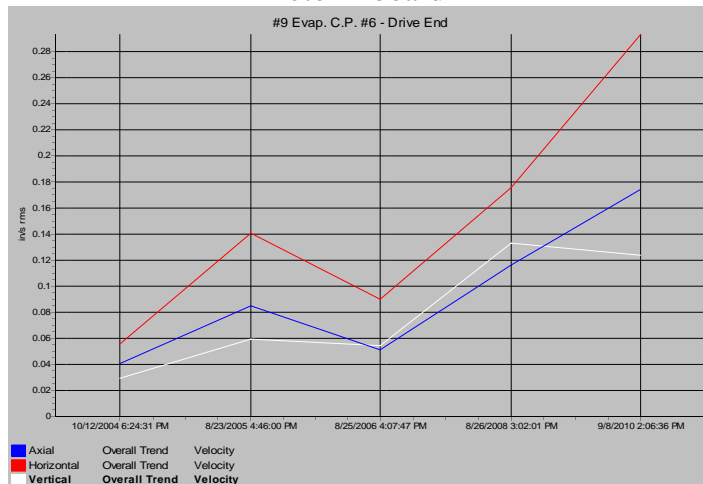
Motor Outboard



Motor Inboard



Motor Outboard Trend



Motor Inboard Trend

**Findings:** Overall amplitudes have increased throughout No. 9 Evaporator Circ. Pump #6 Motor and Pump at the horizontal collection points and data collected at this time indicates presence of potential coupling misalignment and/or possible mass unbalance on motor.

**Recommendations:** Schedule unit to be pm'd, balanced & aligned during next scheduled maintenance down time.